



KENSINGTON KITCHEN

AM
ARCHED MANOR

November 18, 2024



DESIGN MOOD BOARD

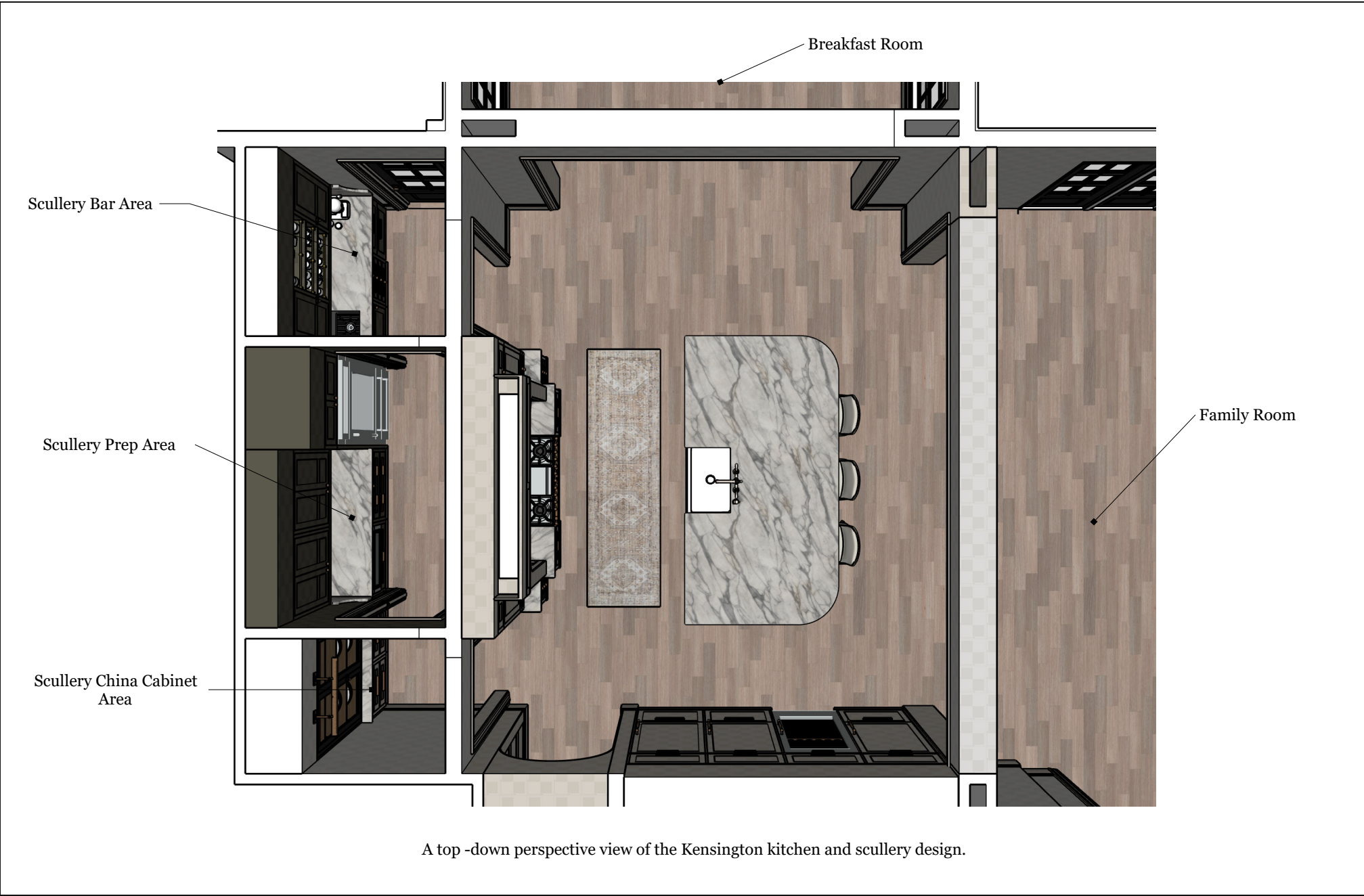

 ARCHED MANOR
 KENSINGTON KITCHEN

REVISIONS

	MM/DD/YY	REMARKS
1	--/--/--	...
2	--/--/--	...
3	--/--/--	...
4	--/--/--	...
5	--/--/--	...

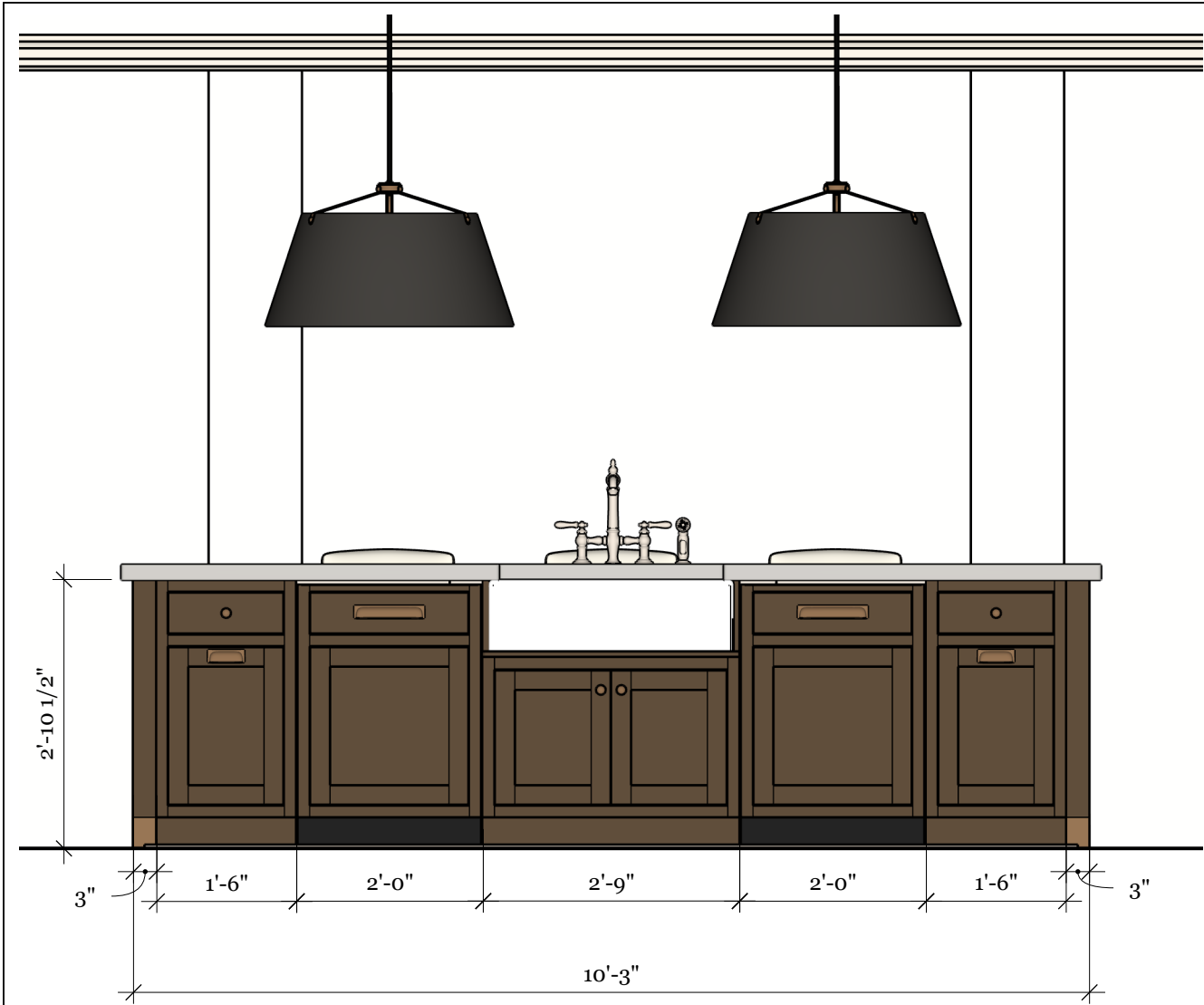
01

A



TOP VIEW PERSPECTIVE	ARCHED MANOR	REVISIONS	
		MM/DD/YY	REMARKS
	KENSINGTON KITCHEN	1	--/--/-- ...
		2	--/--/-- ...
		3	--/--/-- ...
		4	--/--/-- ...
		5	--/--/-- ...

A02



This large island is a statement piece within the Kensington kitchen. Finished in walnut with bronze accents, the white and gray quartz countertop contrasts beautifully to create an elegant, modern aesthetic. Two dishwashers flank the white farmhouse sink, and trash/recycling bins on the outside adds functionality to this space. A direct view into the family room makes this a perfect entertaining spot!



24" Matte Black Butte Pendant



Kohler Artifacts Bridge Kitchen Faucet in Vibrant Nickel



ISLAND & SINK FINISHES

AM
ARCHED MANOR
KENSINGTON KITCHEN

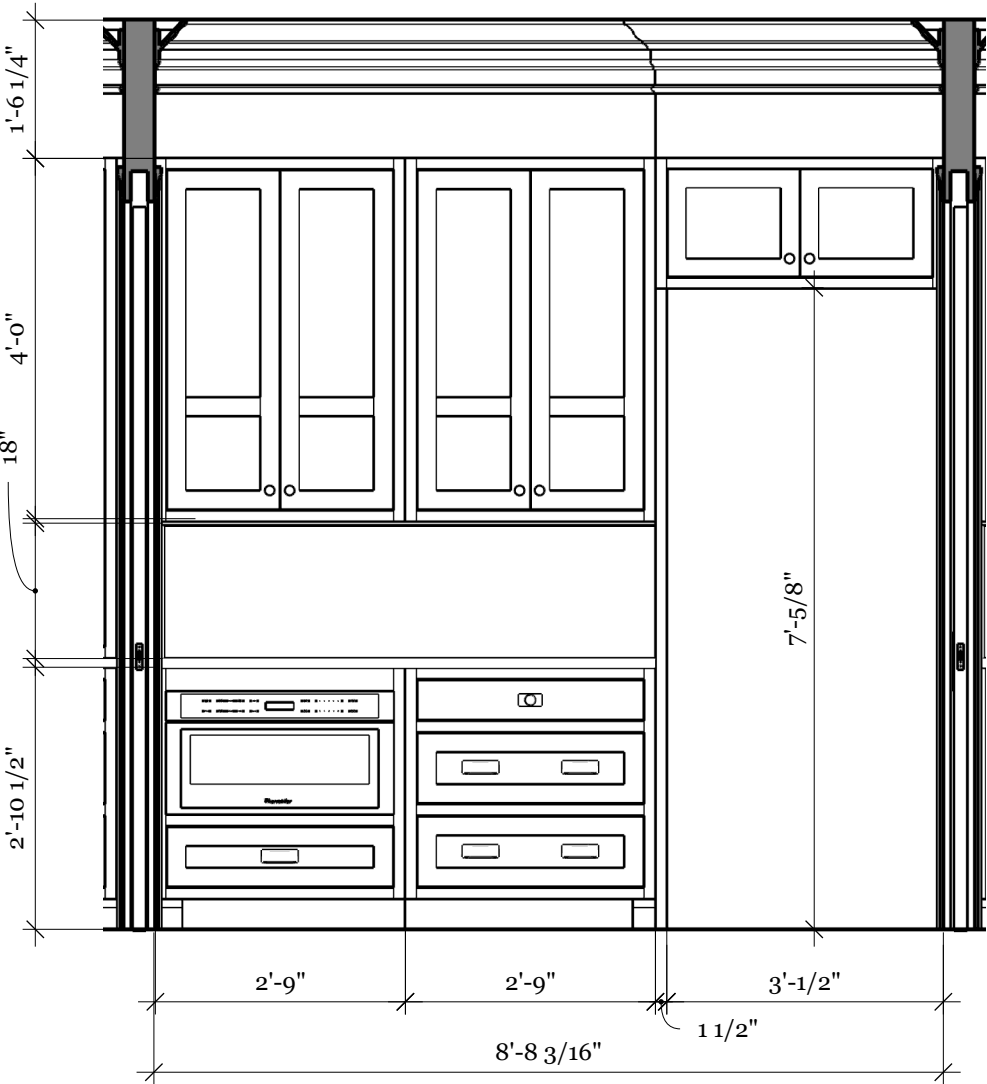
REVISIONS		
	MM/DD/YY	REMARKS
1	--/--/--	...
2	--/--/--	...
3	--/--/--	...
4	--/--/--	...
5	--/--/--	...

The same 3-piece crown molding is used in this prep area, which brings consistency throughout the space and a high-end aesthetic

The upper 48" cabinets provide ample food storage for dry goods. Features adjustable shelves and soft-close hinges.



Bosch 30" Microwave Drawer saves counter space and gives a comfortable height for food handling



The prep area of the scullery doubles as both a pantry for dry-goods, as well as a food preparation area. The microwave drawer is great for heating/cooking and the full-size refrigerator/freezer is perfect for storing additional food and drinks. Aged bronze hardware and a quartz countertop and backsplash make this a traditional yet modern space – it’s as functional as it is beautiful!

SCULLERY PREP AREA DESIGN

AM
ARCHED MANOR
KENSINGTON KITCHEN

REVISIONS		
	MM/DD/YY	REMARKS
1	--/--/--	...
2	--/--/--	...
3	--/--/--	...
4	--/--/--	...
5	--/--/--	...



RENDERS

ARCHED MANOR
KENSINGTON KITCHEN

REVISIONS		
	MM/DD/YY	REMARKS
1	--/--/--	...
2	--/--/--	...
3	--/--/--	...
4	--/--/--	...
5	--/--/--	...